

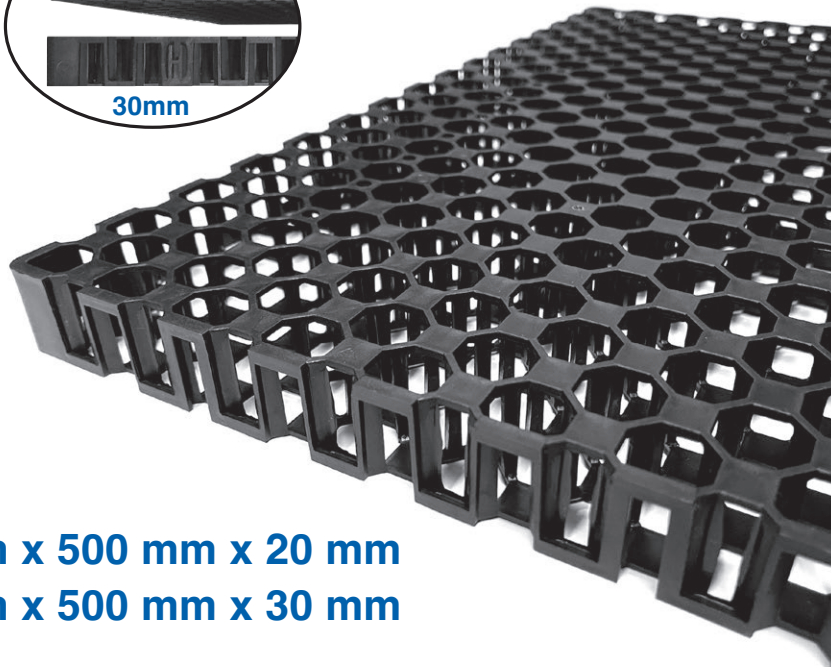
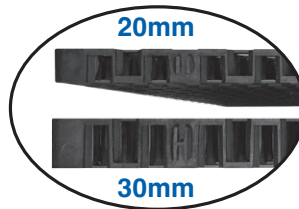


# OCTO DRAINAGE CELL®

## Sub-Surface Drainage Solutions



OCTO Drainage Cell® Specifications :		
Height (mm)	20	30
Width (mm)	500	
Length (mm)	500	
Weight (kg/m <sup>2</sup> )	± 2.1	± 2.6
Discharge capacity @ 1% gradient (L/M/S)	13	16.5
Surface void area	62%	65%
Material	100% Recycled PP	
UV Stabilised	Yes	
OCTO Drainage Cells® per m <sup>2</sup>	4	
Compression strength	> 200kN	
Internal void area	95%	
Color	Black	

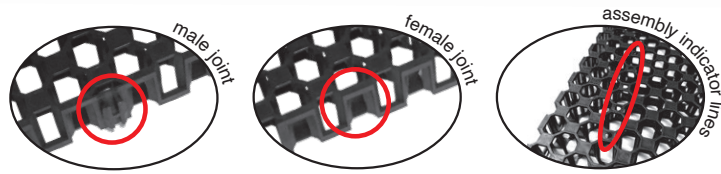
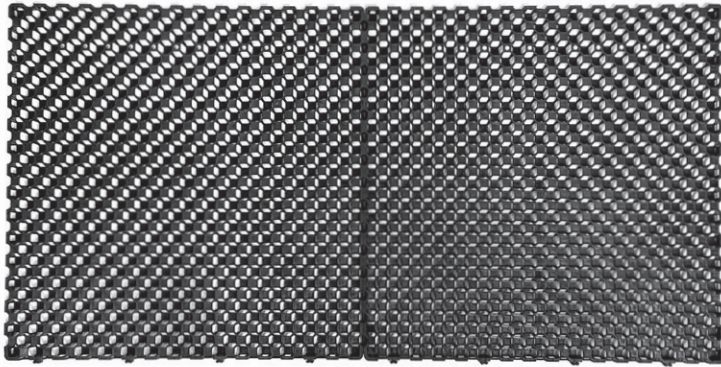
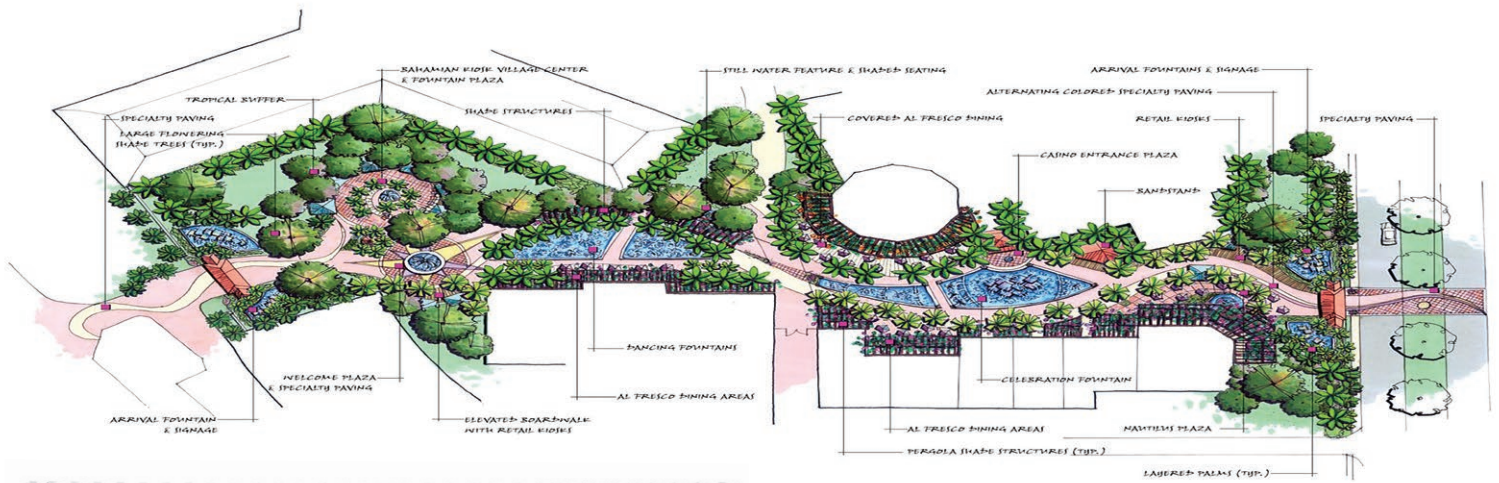


- OCTO Drainage Cell® 500 mm x 500 mm x 20 mm
- OCTO Drainage Cell® 500 mm x 500 mm x 30 mm

### Technical Data: PP Material

<i>The figures given in this technical chart sheet are the results of tests carried by Titan Petchem</i>			
Typical Properties	ASTM Test	Units	Typical Value
Density	D1505	g/cm <sup>2</sup>	0.9
Tensile Strength at Yield	D638	kg/cm <sup>2</sup>	300
Elongation at Yield	D638	%	10
Flexural Modulus	D790B	kg/cm <sup>2</sup>	13000
Notched Izod Impact strength at 23°	D256A	kg.cm/cm	6
Heat Deflection Temperature at 4.6kg/cm <sup>2</sup>	D638	°c	85
Rockwell Hardness	D785A	R scale	85
Water Absorption after 24 hours	D570	%	0.02

Manufactured from 100% environmentally friendly recycled plastics



**Advantages of OCTO Drainage Cell®**

- Light weight
- High compressive strength and durable
- Cost effective
- Efficient sub-soil drainage
- Multiple applications - for sports fields, civil works, retaining wall, bio-filtration, groundwater recharges, general landscape applications.

**Application Areas:**

- Roof garden
- Landscaped deck
- Planter Box
- Retaining / basement wall
- Playground
- Bridge abutments
- Sports field
- Tunnel and landfills
- Paved area and roadway
- Golf course
- Pond filter system

**OCTO Drainage Cell®** system is an engineering design provides a perfect solution for sub-soil drainage application for creating successful sports fields, roof-top gardens, retaining walls, driveway, carparks and feature ponds, etc - avoiding any traditional problems associated with cracking or leakage.

**OCTO Drainage Cell®** is designed under Feng Shui "风水", Bagua "八卦" - Hexagon structure cup which provides water retention for passive irrigation and water proofing membrane protection.

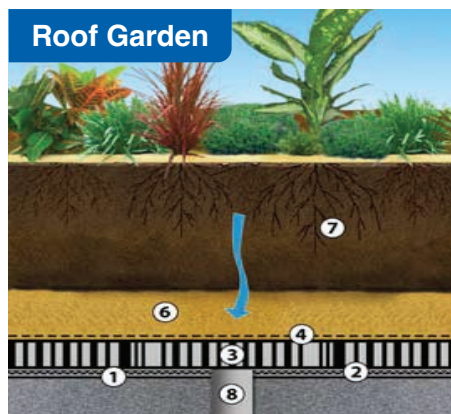
**OCTO Drainage Cell®** is manufactured from 100% re-cycled Polypropylene - plastics which is very flexible and lightweight to install easily by interlocking one to another either horizontally or vertically.

**OCTO Drainage Cell®** - PP Interlocking Drainage Cell is designed and approved as Singapore Green Label product under Singapore Environment Council.

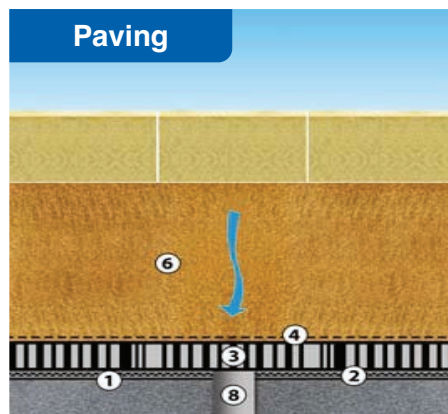
	<b>SAMPLE REFERENCE</b>
	<b>S1</b>
	<b>ULTIMATE LOAD, kN</b>
	<b>239.17</b>

**Installation Procedure:**

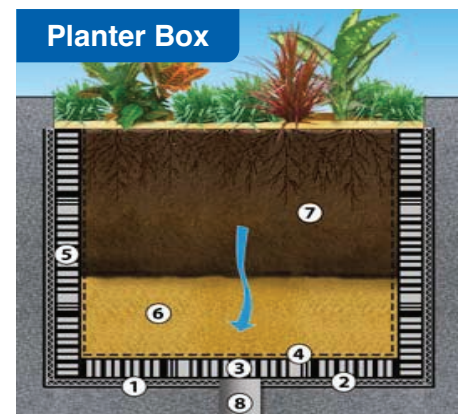
1. Apply waterproofing layer and protection screed specified.
2. Install **OCTO Drainage Cell®** with the studs facing the structure.
3. Lay geotextiles filter on top of **OCTO Drainage Cell®**.
4. Backfill permeable sandy soil layer as specified.
5. Place permeable top soil as specified.
6. Proceed with landscaping / paving work.



- 1 Waterproof membrane
- 2 Protection board



- 3 **OCTO Drainage Cell®**
- 4 Geotextile fabric



- 5 **OCTO Drainage Cell®**
- 6 Coarse washed river sand
- 7 Soil mix
- 8 Outlet pipe